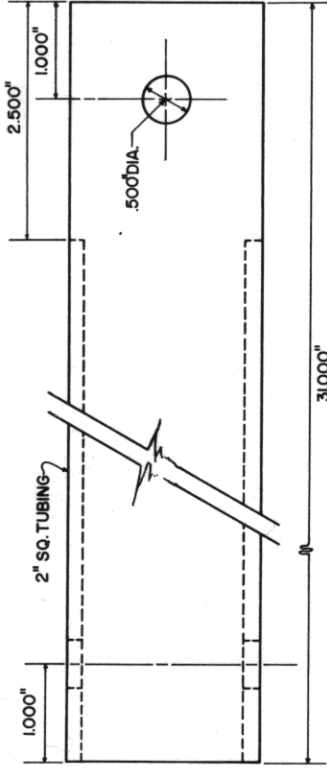
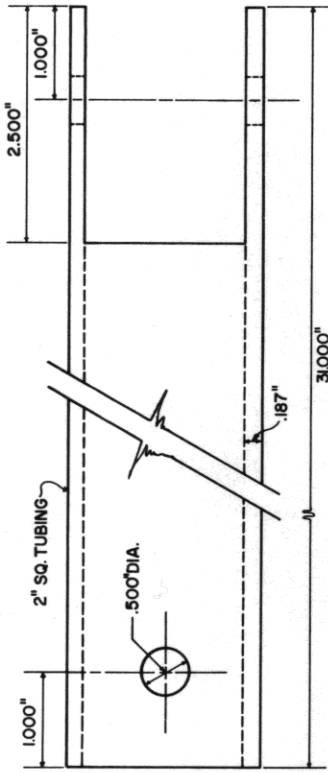


BASED ON UNIV. OF FLA. PLAN NO. 1081
 COOPERATIVE EXTENSION WORK IN
 AGRICULTURE AND HOME ECONOMICS

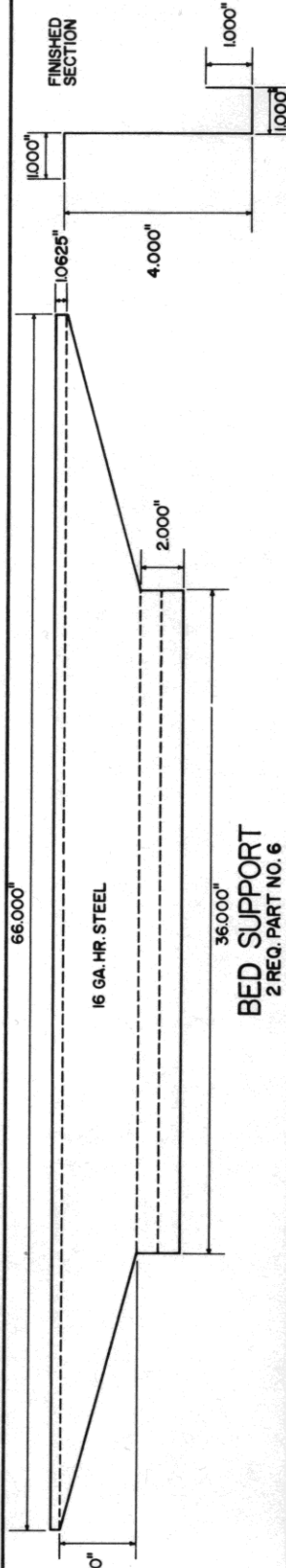
UNITED STATES DEPARTMENT OF AGRICULTURE COOPERATING
 AND
 NURSERY WAGON
 FOUR WHEEL STEER

FLA. '78 6293 SHEET 1 OF 5

HANDLE
1 REQ. PART NO. 25
NOT TO SCALE



1) CUT OUT TWO PIECES FROM 16 GA. HR. STEEL
2) BEND ON BROKEN LINES TO SECTION SHOWN.

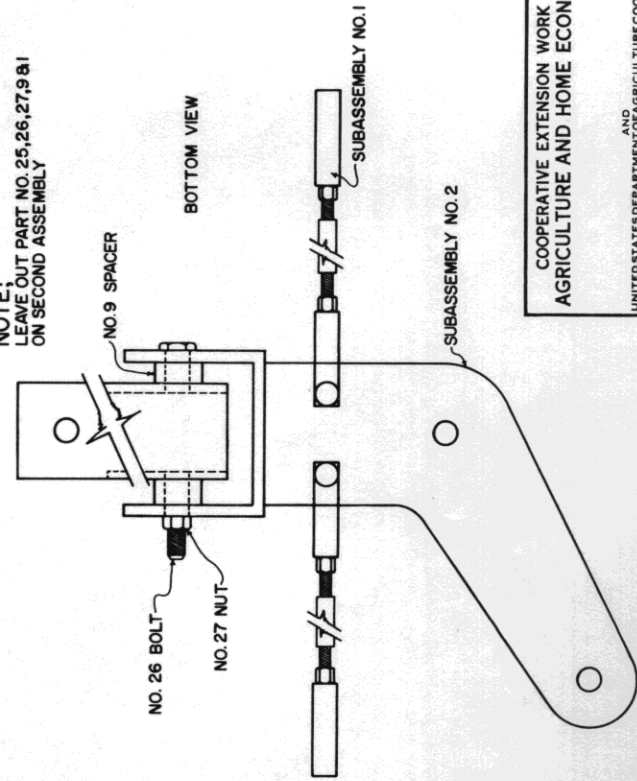


BED SUPPORT
2 REQ. PART NO. 6

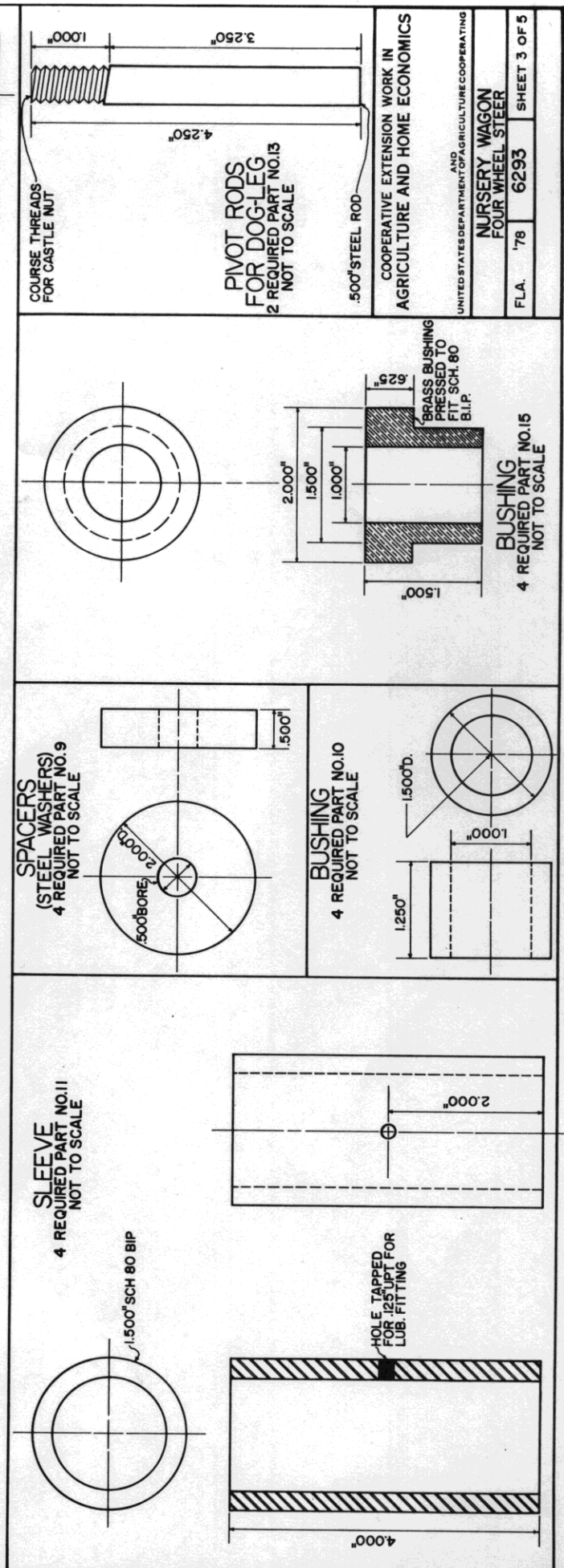
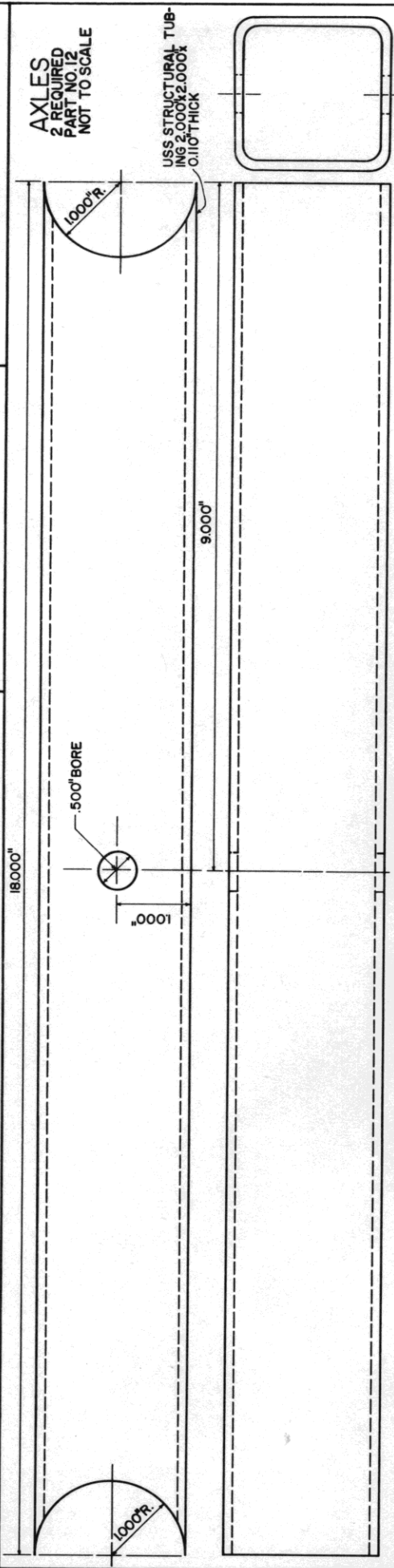
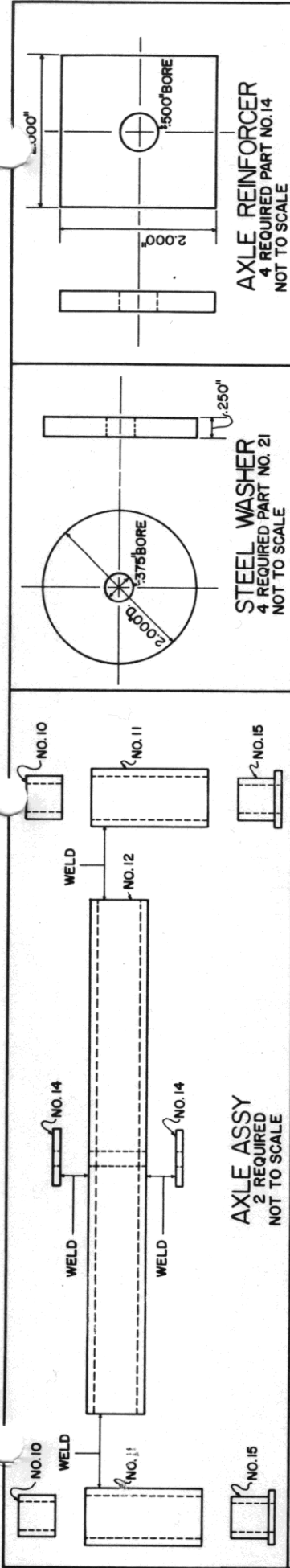
PARTS LIST

PART NUMBER	DESCRIPTION	NUMBER REQUIRED	P-PURCHASE M-MAKE
#1	TONGUE MOUNTING "U" PLATE	1	M
#2	WHEEL SHAFT	4	M
#3	DOG LEG PLATE	2	M
#4	STEERING ARM LEVER	4	M
#5	BED SUPPORT STIFFENER	2	M
#6	BED SUPPORT	2	M
#7	STEERING ROD	1	M
#8	TIE ROD	4	M
#9	SPACER	4	M
#10	SMALL BUSHING	4	M
#11	SLEEVE	4	M
#12	AXLE	2	M
#13	PIVOT ROD	2	M
#14	AXLE REINFORCER	4	M
#15	LARGE BUSHING	4	M
#16	TIE ROD END (INT. HARVESTER NO. 529 430-R1 OR EQUAL)	10	P
#17	1/2" N.F. 20 NUT	10	P
#18	1/2" x 1/2" N.F. 20 BOLT WITH HEAD REMOVED	10	P&M
#19	3/8" I.I.N.C. CASTLE NUT	4	P
#20	400 x 8 WHEEL AND TIRE WITH SELF LUBRICATING BEARINGS; 3/8" BORE ON OUTSIDE BEARING, 1" BORE ON INSIDE	4	P&M
#21	WASHER	4	M
#22	3/8" x 1/2" 16NC. CAP SCREW	4	P
#23	3/8" x 1/2" 11NC. CASTLE NUT	2	P
#24	WASHER-3/8" INSIDE BORE, 1" O.D., 1/8" THICK	4	P
#25	HANDLE	1	M
#26	1/2" x 4" N.F. 20 BOLT	1	P
#27	1/2" N.F. 20 NUT	1	P
#28	WASHER	4	M

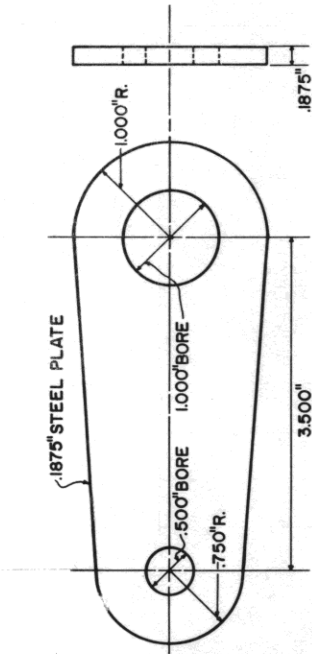
NOTE:
LEAVE OUT PART NO. 25, 26, 27, 9 & 1
ON SECOND ASSEMBLY



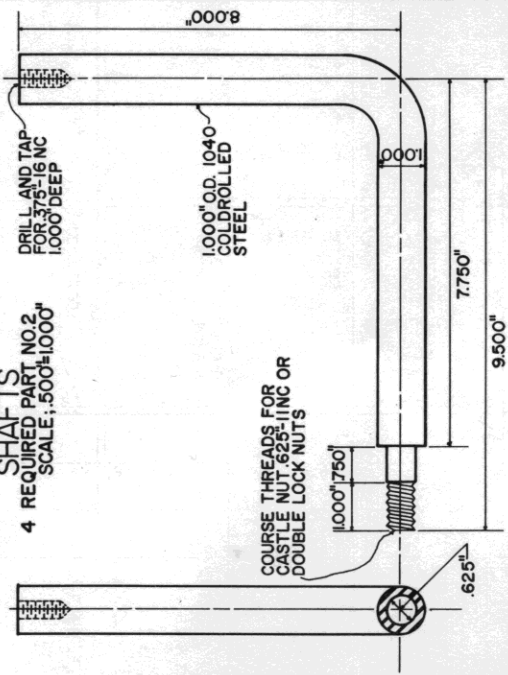
HANDLE ASSEMBLY
2 REQUIRED



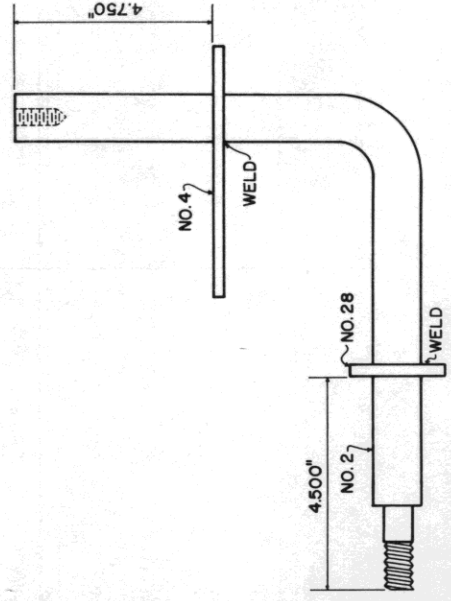
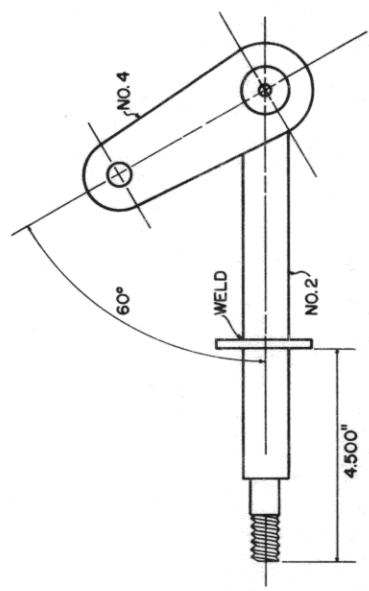
STEERING ARM LEVER
4 REQUIRED PART NO. 4
NOT TO SCALE



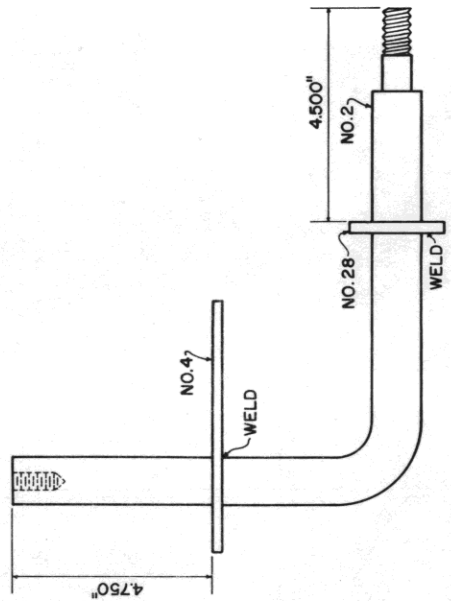
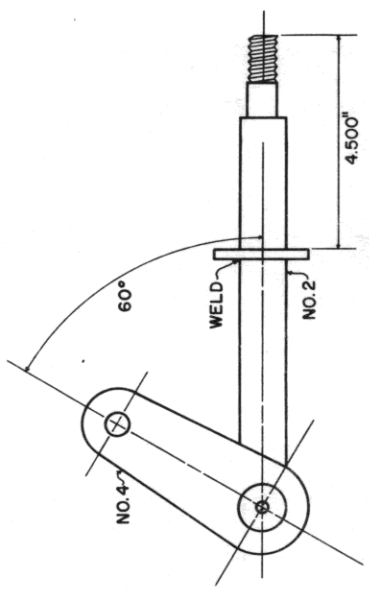
SHAFTS
4 REQUIRED PART NO. 2
SCALE: .500"=1.000" INCH



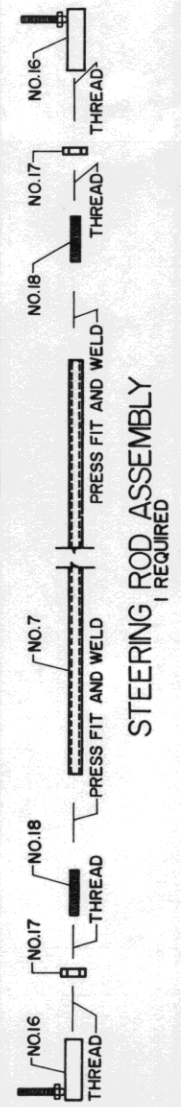
LEFT FRONT & RIGHT REAR WHEEL SHAFT ASSY.
SCALE: .500"=1.000" INCH



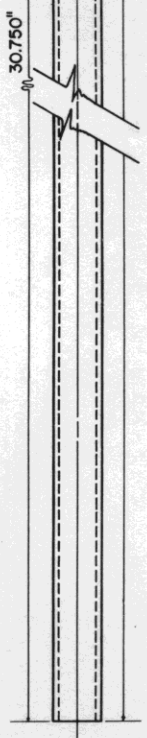
RIGHT FRONT & LEFT REAR WHEEL SHAFT ASSY.
SCALE: .500"=1.000" INCH



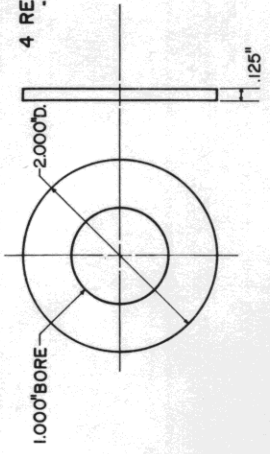
STEERING ROD ASSEMBLY
1 REQUIRED

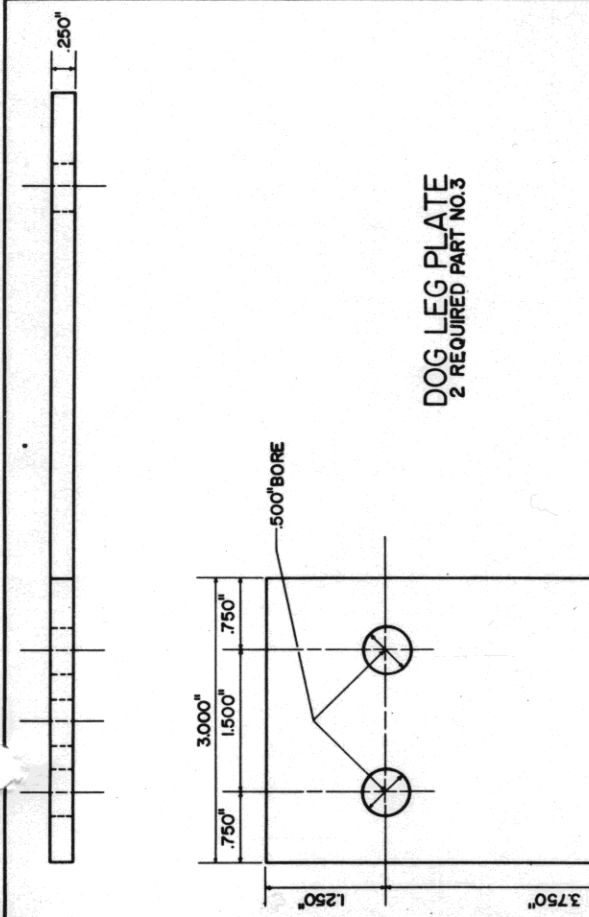


STEERING ROD
1 REQUIRED PART NO. 7

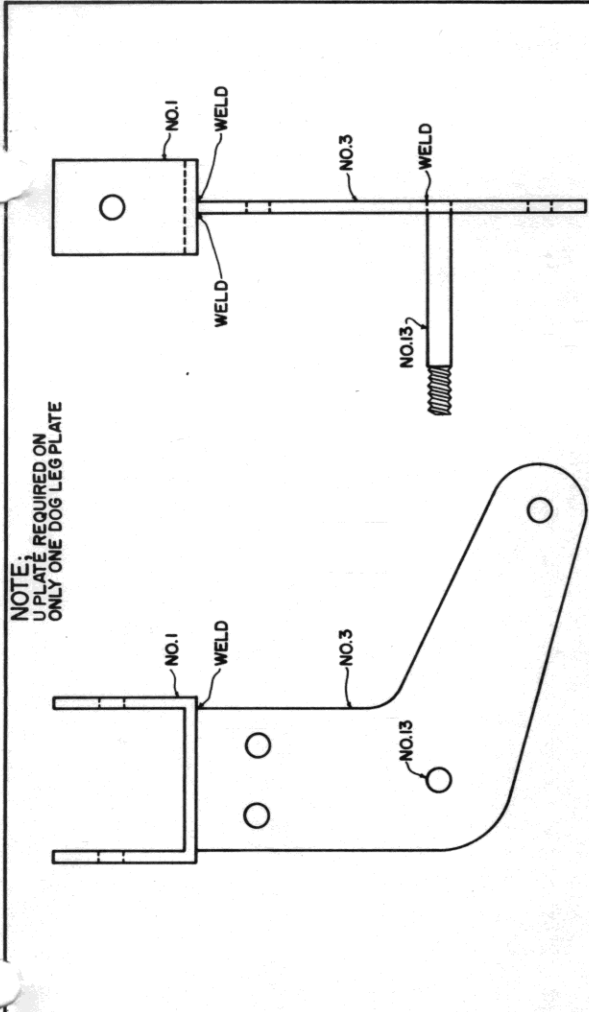


WASHER
4 REQUIRED PART NO. 28



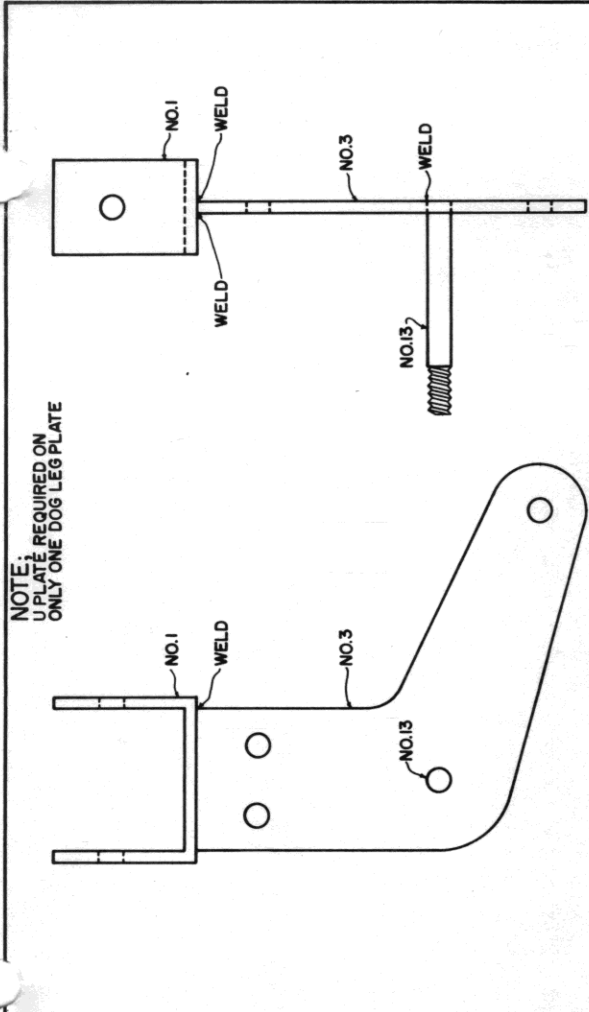


DOG LEG PLATE
2 REQUIRED PART NO.3

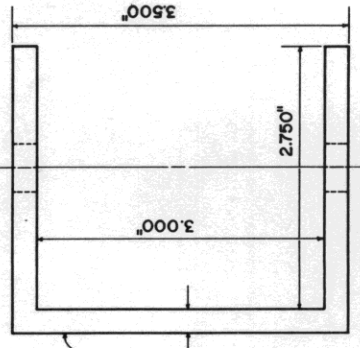
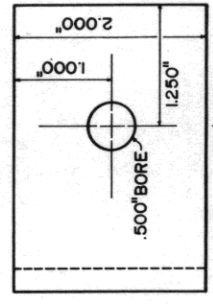
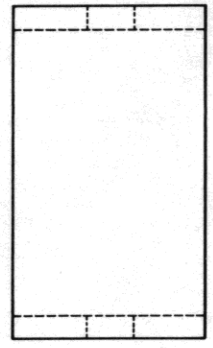


NOTE: ONLY ONE DOG LEG PLATE REQUIRED ON U-PLATE

TONGUE MOUNTING U-PLATE
1 REQUIRED PART NO.1

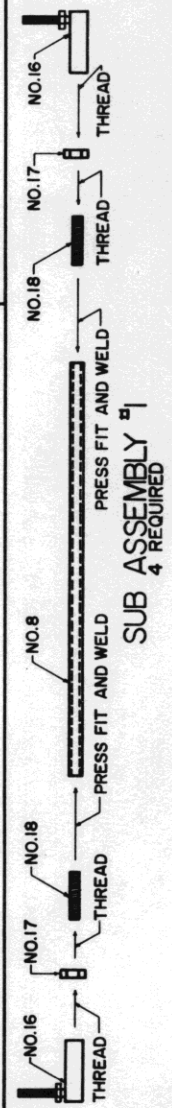


TIE ROD
4 REQUIRED PART NO.8

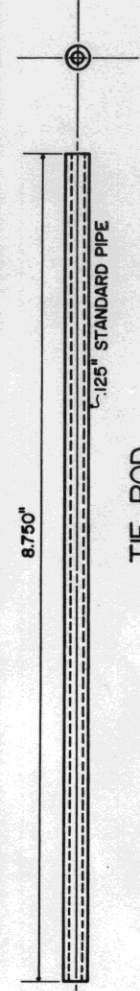


DOG LEG PLATE
2 REQUIRED PART NO.3

DOG LEG PLATE
2 REQUIRED PART NO.3



TIE ROD
4 REQUIRED PART NO.8



TIE ROD
4 REQUIRED PART NO.8